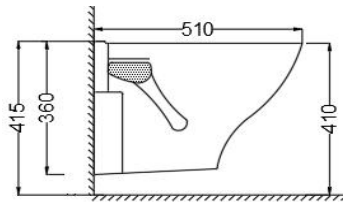
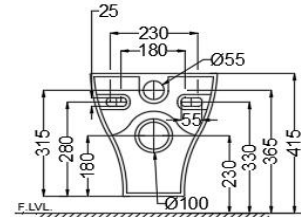


TOP VIEW



SIDE VIEW



BACK VIEW

General Information

| | |
|--------------|-----------------------------|
| Product Code | AIS-WHT-101951SPPSM |
| Brand | Essco |
| Colour | White |
| Type | Wall Hung WC |
| Material | Ceramic-Vitreous China (VC) |

Product Specification

| | |
|--------------------------------------|--|
| Product Dimension | 340x510x360 mm |
| Bowl Opening (Inner Dimension) | 260x340 mm |
| Product Net Weight | 14.5 kg |
| Product Gross Weight | 18.5 kg |
| Packaging Dimension | 410x375x535 mm |
| Outlet | Horizontal |
| Inlet Hole And Outlet Hole Dimension | Internal diameter of inlet hole dia. $\varnothing 55 \pm 3$ mm External diameter of outlet hole dia. $\varnothing 100 \pm 5$ mm |
| Product Features | Sleek Design With Rectangular Shape Complete Trap Glaze, Packed with Accessories PP Soft Close Slim Seat Cover Dual Flushing-3/6 LPF Anti germ glaze |

ACCESSORIES INCLUDED

| | |
|---------------------|--------------|
| Seat cover | AIS-WHT-103S |
| Inlet Outlet Gasket | ZPS-WHT-GK01 |

ACCESSORIES RECOMMENDATION

| | |
|-------------------|--|
| Rag bolt | ZPS-SNS-RB01, ZPS-MST-RB02, ZPS-MST-RB07 |
| Concealed cistern | JCS-WHT-2400S, 2400P, 2400, 2400WS, 2400WP, 2400FS, 2400FP, 2431P, 2431FP, 2431, 2431S, 2431FS |

CARE AND CLEANING GUIDELINES

- Vitreous china sanitary ware products are fragile in nature and need to be handled with care (to avoid personal injury) at all times during its storage, handling, installation and use thereafter.
- The product is heavy and it is recommended that two persons hold it while it is being fixed.
- Carefully inspect the new product for damage before installation.
- Risk of product damage. Over tightening may cause breakage or chipping of vitreous china.
- Risk of external leakage. Do not lift or rock the bowl after placement.
- Always test your cleaning solution on an inconspicuous area on the product before applying it to the entire surface.
- Do not allow cleaners to sit or soak on the product.
- Use a soft, dampened sponge or cloth to clean. Never use abrasive material like a bristle brush or scouring pad.
- Wipe surfaces clean and rinse completely with water immediately after applying cleaners.
- Clean Chrome, stainless steel surfaces once a week. Do not use cleaners containing chloride on chrome, stainless steel. If used, rinse the surface immediately to prevent corrosion.
- Wherever chrome plating is used on the products, use only warm water to clean and then dry with a soft cloth.

QUALITY MANAGEMENT SYSTEM - ISO 9001



DISCLAIMER: Our every effort has been made to ensure factual accuracy, the information presented subject to changes due to requirements in different sites, markets and/ or countries. All dimensions are in mm (Tolerance ± 5 MM). Jaquar reserves the right to make the necessary amendments at any time without prior notice.

For Installation Refer Actual Product